

**Material:**

Housing: 30% Glass filled PBT UL94V-0.  
 Contacts: Phosphor Bronze.  
 Plating: Selective Gold plated.

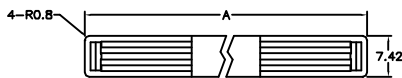
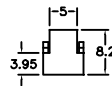
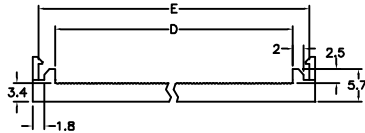
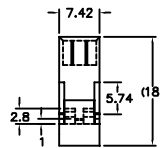
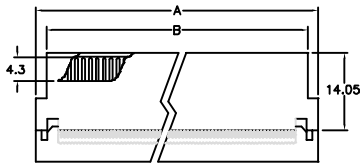
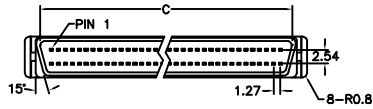
**Electrical Characteristics:**

Current Rating: 1 AMP.  
 Insulator Resistance: 5000MΩmin. at DC 500V.  
 Contact Resistance: 20mΩmax. at DC 100mA.  
 Operating Temperature: -55°C ~ +105°C.

**Features:**

- \* SCSI IDC Type.
- \* Recommended 0.635mm flat cable.
- \* Male 50 & 68 pin available.

Mates with: 7221, 7225, 7227.



Position	Dimension				
	A	B	C	D	E
50	40.00	36.20	34.94	32.20	36.90
68	51.45	47.60	46.36	43.50	48.25

**Ordering information**

SC06- 68 M 3  
 Series Position M: Male 3: Selective Gold Plated