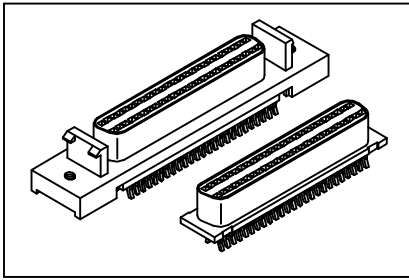


# SCSI Straddle Type

# GXCON



### Material:

Housing: 30% Glass filled PBT UL94V-0.

Contacts: Phosphor Bronze.

Plating: Gold plated.

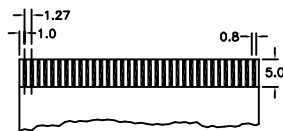
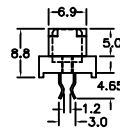
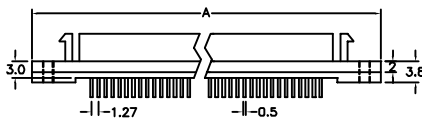
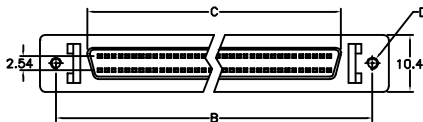
### Electrical Characteristics:

Current Rating: 1 AMP.

Insulator Resistance: 1000MΩmin. at DC 500V.

Contact Resistance: 30mΩmax. at DC 100mA.

Operating Temperature: -55°C~+105°C.



Thickness 1.6 ±0.05mm

Position	A	B	C	D
50	52.45	46.48	34.98	Threaded Holes
				2*56
68	63.88	57.91	46.41	2*56
				4*40
LOCK LATCH	W/O RAIL WITH LATCH	W/O RAIL W/O LATCH		
	#2*56	#4*40	#2*56	#4*40
	D	E	H	J

## Ordering information

SC03-  
Series

50  
Position

F  
F: Female

D  
See: Lock Latch  
N: Without Die Cast Bachshell,  
All Plastic Housing

3  
3: Selective Gold Plated