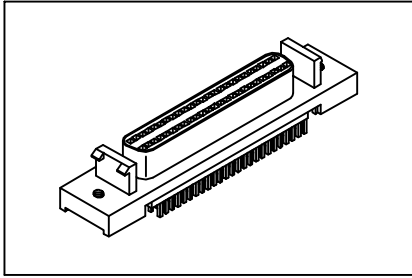


# SCSI Straight Type

# GXCON

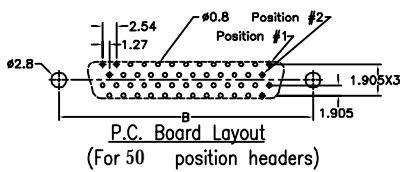
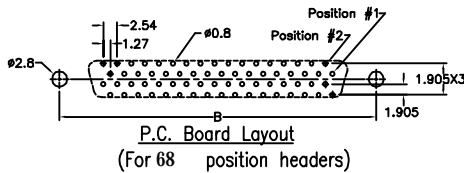
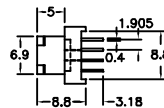
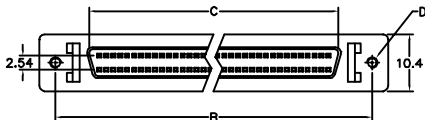
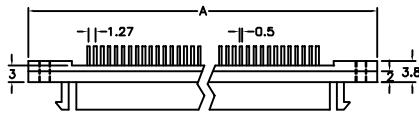


**Material:**

Housing: 30% Glass filled PBT UL94V-0.  
 Contacts: Phosphor Bronze.  
 Plating: Gold plated.

**Electrical Characteristics:**

Current Rating: 1 AMP.  
 Insulator Resistance: 1000MΩmin. at DC 500V.  
 Contact Resistance: 30mΩmax. at DC 100mA.  
 Operating Temperature: -55°C~+105°C.



| Position   | A                   | B     | C                  | D<br>Threaded Holes |
|------------|---------------------|-------|--------------------|---------------------|
| 50         | 52.45               | 46.48 | 34.98              | 2*56<br>4*40        |
| 68         | 63.88               | 57.91 | 46.41              | 2*56<br>4*40        |
| LOCK LATCH | W/O RAIL WITH LATCH |       | W/O RAIL W/O LATCH |                     |
|            |                     |       |                    |                     |
|            | #2*56               | #4*40 | #2*56              | #4*40               |
|            | D                   | E     | H                  | J                   |

## Ordering information

SC02- 50 F D 3  
 Series Position F: Female See: Lock Latch 3: Selective Gold Plated