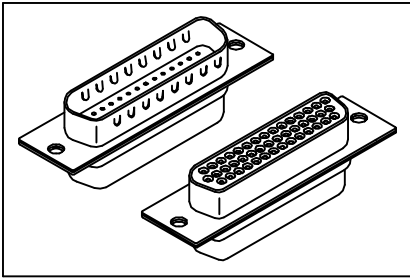


# H.D. D-SUB Crimp Type

# GXCON



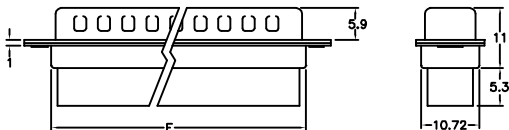
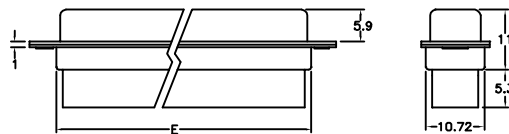
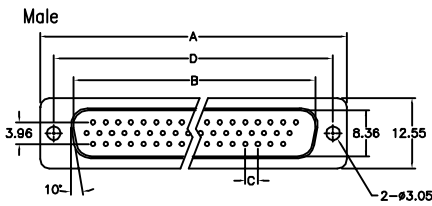
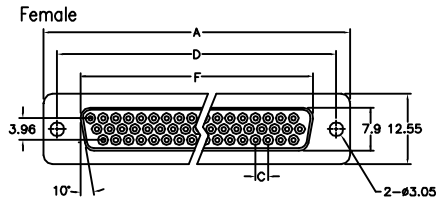
**Material:**

Housing: 30% Glass filled PBT UL94V-0.  
 Contacts: Brass.  
 Terminal Plating: Selective plated.  
 Recommend Wire: 24AWG to 28AWG.

**Electrical Characteristics:**

Current Rating: 1 AMP.  
 Insulator Resistance: 5000MΩmin. at DC 500V.  
 Contact Resistance: 20mΩmax. at DC 100mA.  
 Operating Temperature: -55°C ~ +105°C.

**Features:**  
 \* UL cUL Listing.



Position	Dimension					
	A	B	C	D	E	F
15	30.81	16.92	2.29	24.99	19.3	16.33
26	39.14	25.25	2.29	33.32	27.5	24.66
44	53.04	38.96	2.29	47.04	41.3	38.38
62	69.32	55.42	2.41	63.50	57.7	54.84

**Ordering information**

HDB08- 62 M I B N1  
 Series Position M: Male T: Tin Shell B: Black Blank: Standard Type  
 F: Female E: Zinc Shell N1: See Page B52

HDB08- PIN- M  
 Series 5K Pins Per Reel M: Male  
 F: Female