

Material:

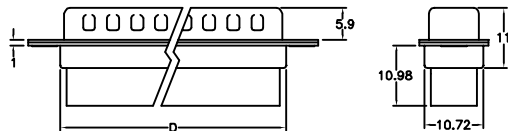
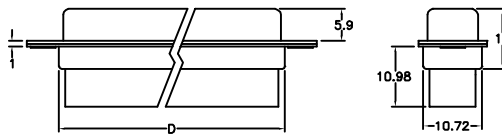
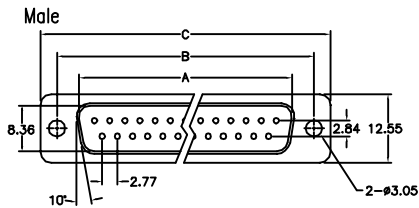
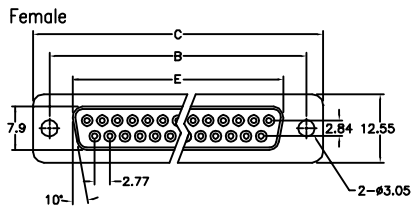
Housing: 30% Glass filled PBT UL94V-0.
 Contacts: Brass.
 Terminal Plating: Selective plated.
 Recommend Wire: 24AWG to 28AWG.

Electrical Characteristics:

Current Rating: 1 AMP.
 Insulator Resistance: 5000MΩmin. at DC 500V.
 Contact Resistance: 20mΩmax. at DC 100mA.
 Operating Temperature: -55°C ~ +105°C.

Features:

* UL cUL Listing.



Position	Dimension				
	A	B	C	D	E
9	16.92	24.99	30.81	19.28	16.33
15	25.25	33.32	39.14	27.51	24.66
25	38.96	47.04	53.04	41.30	38.38
37	55.42	63.50	69.32	57.71	54.84
50	52.86	61.11	66.90	55.30	52.34

Ordering information

DB08- 50 M I N1
 Series Position M: Male T: Tin Shell Blank: Standard Type
 F: Female E: Zinc Shell N1: See Page B52

DB08- PIN- M
 Series 5K Pins Per Reel M: Male
 F: Female