

Material:

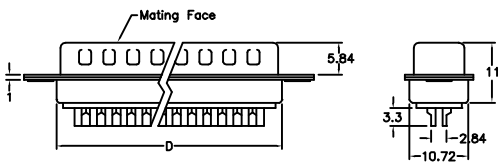
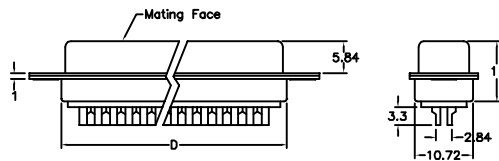
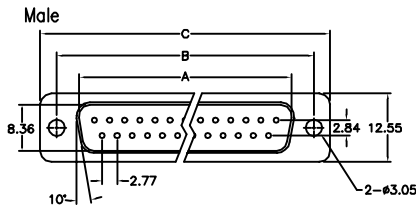
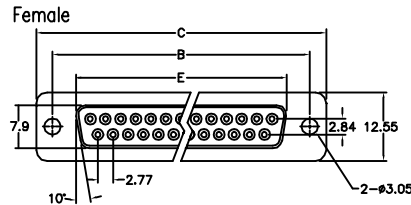
Housing: 30% Glass filled PBT UL94V-0.
 Contacts: Brass.
 Plating: Gold plated.

Electrical Characteristics:

Current Rating: 1 AMP.
 Insulator Resistance: 5000MΩmin. at DC 500V.
 Contact Resistance: 20mΩmax. at DC 100mA.
 Operating Temperature: -55°C ~ +105°C.

Features:

* UL cUL Listing.



| Position | Dimension | | | | |
|----------|-----------|-------|-------|-------|-------|
| | A | B | C | D | E |
| 9 | 16.92 | 24.99 | 30.81 | 19.28 | 16.33 |
| 15 | 25.25 | 33.32 | 39.14 | 27.51 | 24.66 |
| 25 | 38.96 | 47.04 | 53.04 | 41.30 | 38.38 |
| 37 | 55.42 | 63.50 | 69.32 | 57.71 | 54.84 |
| 50 | 52.86 | 61.11 | 66.90 | 55.30 | 52.34 |

Ordering information

DB07- 50 M I B 3 N1
 Series Position M: Male T: Tin Shell B: Black 3: Selective Gold Plated Blank: Standard Type
 F: Female E: Zinc Shell U: Blue W: White N1: See Page B52