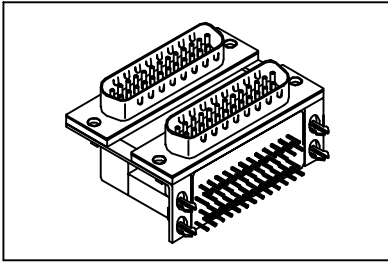


D-SUB Double Port Right Angle Type

GXCON



Material:

Housing: 30% Glass filled PBT UL94V-0.

Contacts: Brass.

Plating: Gold plated.

Electrical Characteristics:

Current Rating: 1 AMP.

Insulator Resistance: 5000MΩmin. at DC 500V.

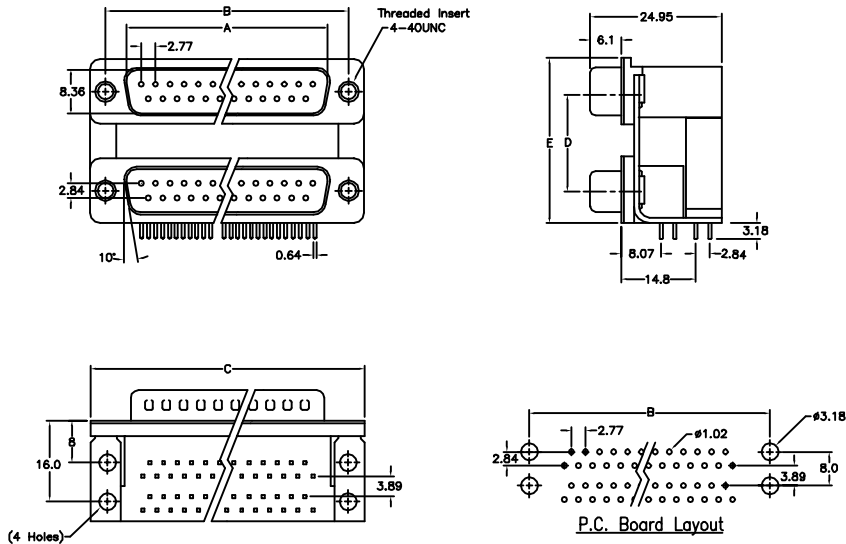
Contact Resistance: 20mΩmax. at DC 100mA.

Operating Temperature: -55°C~+105°C.

Features:

* UL cUL Listing.

Mates with: 7907, 7908.



Position	Dimension								
	A	B	C	D			E		
9	16.92	24.99	30.81	22.86	19.05	15.88	35.41	31.60	28.43
15	25.25	33.32	39.14	22.86	19.05	15.88	35.41	31.60	28.43
25	38.98	47.04	53.04	22.86	19.05	15.88	35.41	31.60	28.43

Ordering information

DB06- 25 M M K 1
 Series Position UP: 16.0(0.63") Down: 8.0(0.315") H: Grounding Fork, Jack 1: 15.88 See Dim: D
 M: Male M: Male Screw Separately 2: 19.05 See Dim: D
 F: Female F: Female K: Grounding Strap 3: 22.86 See Dim: D

* Mix shell size Available, Please Consult Factory.