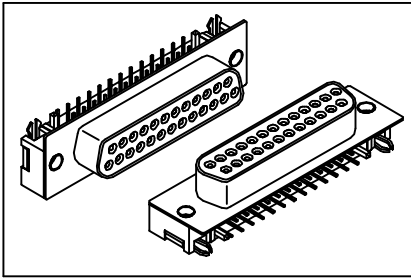


# Slim D-SUB Right Angle Type

# GXCON



### Material:

**Housing:** High temperature housing UL94V-0 withstands IR and VPR soldering methods.

**Contacts:** Phosphor Bronze.

**Plating:** Selective Gold plated.

### Electrical Characteristics:

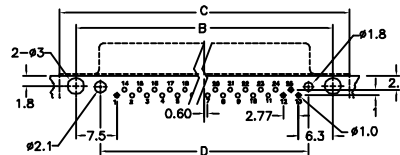
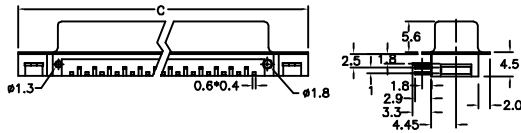
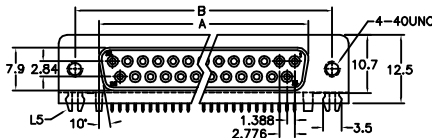
**Current Rating:** 1 AMP.

**Insulator Resistance:** 5000MΩmin. at DC 500V.

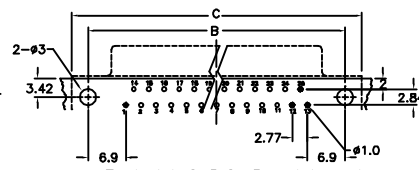
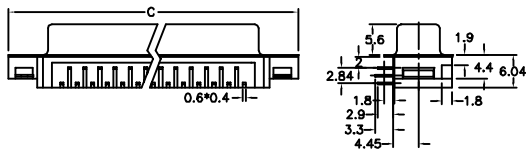
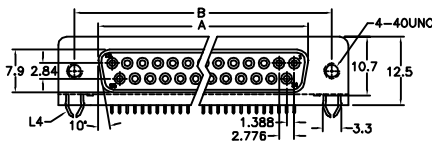
**Contact Resistance:** 20mΩmax. at DC 100mA.

**Operating Temperature:** -65°C~+125°C.

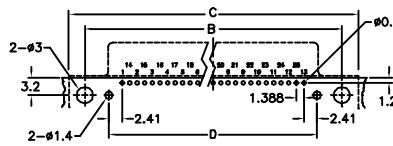
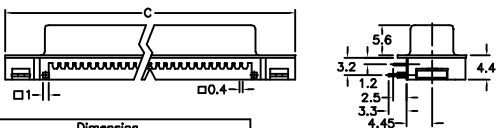
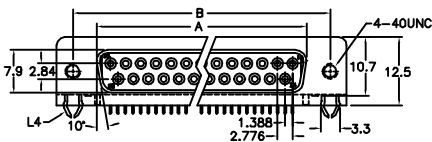
**Max Processing Temperature:** 230°C for 30~60 seconds.



Footprint 1 P.C. Board Layout  
DB03-25F321/L5



Footprint 2 P.C. Board Layout  
DB03-25F322/L4



Footprint 3 P.C. Board Layout  
DB03-25F323/L4

Position	Dimension			
	A	B	C	D
15	24.60	33.32	39.20	25.69
25	38.38	47.04	53.04	39.54

### Ordering information

DB03- 25 F 3 2 /L4  
 Series Position Female 3: Selective Gold Plated 2: Right Angle 1: Footprint 1 Lock Type See Above  
 2: Footprint 2  
 3: Footprint 3