

Material:

Housing: PBT, UL94V-0 Rated.

Contacts: Phosphor Bronze.

Plating: Selective gold plated on contact area nickel.

Shell: Cold Roller Steel.

Electrical Characteristics:

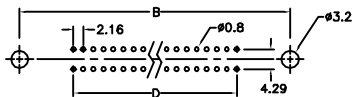
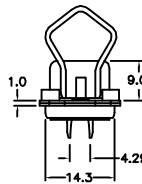
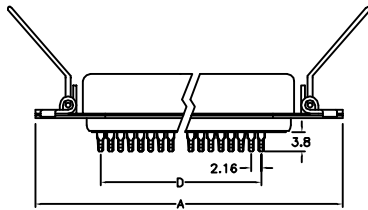
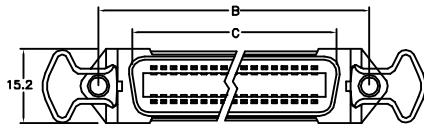
Current Rating: 1 AMP.

Dielectric Withstanding Voltage: AC 1000V For 1 minute.

Insulator Resistance: 1000M Ω min. at DC 500V.

Contact Resistance: 30m Ω max.

Operating Temperature: -55°C~+105°C.



P.C. Board Layout

Position	A \pm 0.13	B \pm 0.1	C \pm 0.13	D \pm 0.13
14	43.7	35.99	25.2	12.96
24	54.5	46.79	36.0	23.76
36	67.6	59.74	48.9	36.72
50	82.8	74.85	64.0	51.84

Ordering information

577- 40 500
 Series 40: Female 140: 14 Pin
 240: 24 Pin
 360: 36 Pin
 500: 50 Pin