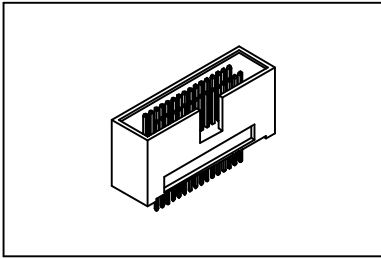


# Box Header 1.27mmX2.54mm(0.050"X0.100")

# GXCON



**Material:**

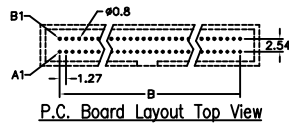
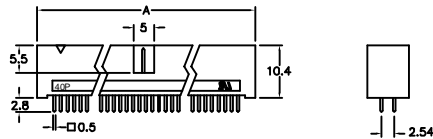
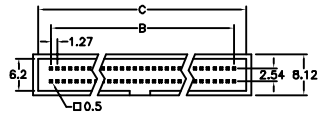
**Housing:** 30% Glass filled PBT UL94V-0.  
**Contacts:** Brass.  
**Plating:** Gold plated over nickel.  
 Tin plated over nickel.  
 Selective gold plated: Gold plated on mating area and tin plated on solder tail.

**Electrical Characteristics:**

**Current Rating:** 0.5 AMP.  
**Insulator Resistance:** 5000MΩmin. at DC 500V.  
**Contact Resistance:** 20mΩmax. at DC 100mA.  
**Operating Temperature:** -55°C ~ +105°C.

**Features:**

- \* Straight type.
- \* Fully shrouded offers excellent protection.
- \* 4 row 1.27mmX2.54mm(0.050"X0.100") PCB Layout.
- \* Choices of 20,26,32,34,40,50,52,60,68,80,100 pin.



Position	Dimension		
	A	B	C
20	20.95	11.43	18.75
26	24.76	15.24	22.56
32	28.57	19.05	26.37
34	29.84	20.32	27.64
40	33.65	24.13	31.75
50	40.00	30.48	37.80
52	41.27	31.75	39.07
60	46.35	36.83	44.15
68	51.43	41.91	49.23
80	59.05	49.53	56.85
100	71.75	62.23	69.55

**Ordering information**

**BX27- 100 1 1 B**  
 Series No. of Pin Count 3: Selective Gold Plated 1: Gold Plated 2: Tin Plated 1: Straight B: Black \*Y: Grey